



INDUSTRIAL STRENGTH

CLEAN GREEN

# BioRestorer

CONCRETE & SURFACE RESTORER



**FOR ALL APPLICATIONS INCLUDING GENERAL USE AND PRESSURE WASHING**

- Water Based • Biodegradable • Safer Than Muriatic & Hcl Acid • Non-Corrosive To Skin • Non-Fuming • No Unstable Acid Blends
- No Phosphates or VOC's • No Noxious or Volatile Fumes

**Clean Green BioRestorer** Concrete & Surface Restorer is a SAFE All-Purpose solution that is water based, biodegradable and environmentally preferred.

Clean Green BioRestorer Concrete & Surface Restorer is a product that replaces traditional hazardous acid cleaners. Clean Green BioRestorer Concrete & Surface Restorer formula works with excellent health and safety benefits, replacing hydrochloric, citric, phosphoric, nitric and other DOT hazardous acids. Composed of low pH organic salt combined with a special blend of cleaning agents, this product performs superbly in many cleaning and restoration projects.



## APPLICATION

**\* DO NOT MIX WITH CHLORINE/BLEACH!**

\*\*Always test in inconspicuous area to confirm product and substrate are compatible. Surface must be in good condition before starting cleaning/restoration.

### GENERAL USE:

For mildly soiled concrete, apply a dilution between 10:1 and 20:1 of Clean Green BioRestorer Concrete & Surface Restorer with water either by downstream or pump up sprayer. Pre-mist surface before application for best results. Surface clean area and rinse well to neutralize pH level.

### HEAVY OIL/GREASE SPOTS ON CONCRETE:

Pre-treat with Clean Green BioWash Multi-Purpose Cleaner Degreaser. Apply Clean Green BioRestorer and allow penetration and saturation time

### TIRE MARKS:

For light and/or medium marks on concrete and similar surfaces, apply a dilution of 1:10 up to 1:15 with water of Clean Green BioRestorer Concrete & Surface Restorer directly onto the surface and immediately clean and rinse off with pressure washer wand or surface cleaner.



## DILUTION TABLE

<b>HEAVY DUTY</b> .....	1:5
<b>MEDIUM DUTY</b> .....	1:10
<b>LIGHT CLEANING/RESTORATION</b> .....	1:20

## REMOVES:

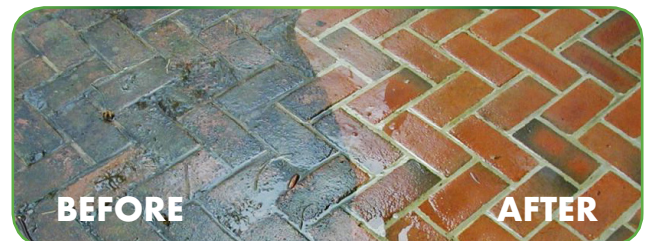
- Rust Stains
- Dirt/Worn Cement From All Types of Surfaces
- Concrete Truck & Equipment
- Tire Marks
- Efflorescence
- Mineral Deposits
- Concrete
- Pavers
- Trucks/Vehicles
- Decorative Concrete
- Kennels
- Tub & Tile
- Steam Tables
- Stainless Steel
- Urinals
- Toilets
- Showers
- And Much More!



## PACKAGING



- 4x1 gallons per case
- 5 gallon pails
- 30 & 55 gallon drums



**FOR INDUSTRIAL & COMMERCIAL USE ONLY. REFER TO SDS FOR FURTHER SAFETY INFORMATION.**

